

Exploration**A Revelatory Eschatology & Genesis XI: The 4th Universal Life, the Beginning of Life on Earth & the ETs**

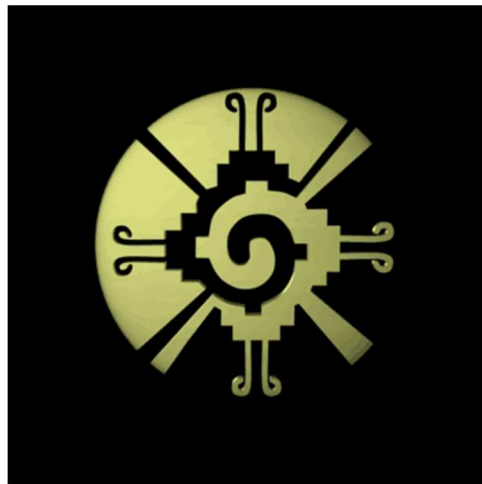
Tony Bermanseder *

Abstract

In this article, the author partly uses metaphors to explore the 4th universal life, the beginning of life on earth & the ETs in a revelatory eschatology and genesis.

Keywords: Revelation, eschatology, genesis, universal life, life on earth, extra-terrestrial.

The symbol of the Maya at the center of the Milky Way galaxy is known as Hunab Ku as 'Mover of all things' and depicting a galactic butterfly across the worlds changing from darkness to light in cycles of time. The Maya named the galactic Center Hunab Ku - the 'Giver of all Life and Measure' and called the 'Pathway from the Earth to Hunab Ku' as 'Kuxan Suum - the Umbilical Cord between Earth' as the Universal Mother and its Galactic Father-Mother.



At the center of Hunab Ku resides a dualized supermembrane manifesting as a multi-dimensional wormhole core connecting a Black Hole 'Mother'-Sink-Source to a White Hole 'Father'-Source-Sink. One can describe the cosmology as a White Hole negative-yang-male charge primary source-sink energy powering a Black Hole positive-yin-female charge secondary sink-source energy.

The characteristic negative charge can be said to originate from a nospace and notime realm, albeit defined mathematically as an unphysical negative- or imaginary space. A physically real space and time so can be defined in the logistical argument of relating the real spacetime of a

* Correspondence: Tony Bermanseder, Independent Researcher. E-mail: omnipysics@cosmosdawn.net

positive space to an imaginary spacetime of a negative space. A self-referential or quantum relativity between two observers; one of each located in either the negative-imaginary or positive-real worlds or realms can so become established.

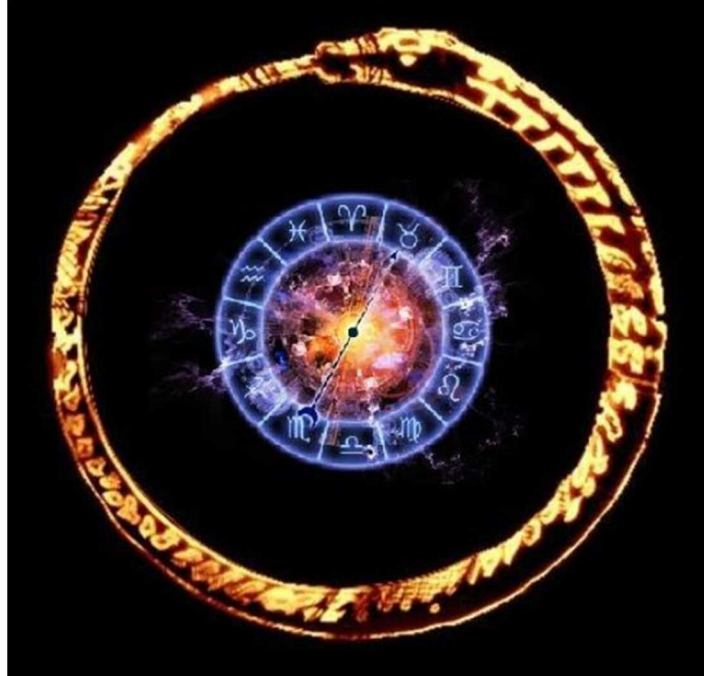
The observer within the negative spacetime considers his/her world as real and considers the observer situated within the positive spacetime as imaginary or as a virtual reality or image of her/himself. The premise of location therefore defines perceived reality for both of the observers arbitrarily, irrespective of how their original frames of self-references are defined or agreed upon.

To poetically color or mythologize or anthropomorphize this essay, the duality coupled supermembrane at the core of the Milky Way galaxy as the Maya's Hunab Ku or 'Giver of all things' can be renamed as Abba – the little serpent (Quetzalcoatl aka Kukulcan aka Gugumatz aka Manitou aka Great Rainbow Dragon-Membrane Baiame etc. etc.).

The symbol of the 'Cosmic Dragon' or Ouroboros as the Mazzaroth or Great 360° Circle of the Zodiac Sky symbolizing the mapping of the Egyptian Nile from the Milky Way Galactic path is translated from the binary code of the Mathimatia in the zero cipher 0 linearized as the unity cipher 1 in a form of modular quantum geometric duality and mirroring the transformation of the superstring classes from a 26-dimensional {A-Z or alpha-omega or beginning-end} Bosonic closed superstring spectrum into a distribution of both closed and open superstring classes; the open superstring classes then relating to their attachment to lower dimensional Dirichlet branes from their higher dimensional origin, such as superstring class I.

This can be defined as an algebraic-topological Unitary Circle Group or $U(1)$ relating the closed 'non-gauged' 26 bosonic integer dimensions to 26 open $U(1)$ -gauged bosonic integer dimensions subsequently differentiated in the unit circle in clockwise and anticlockwise chirality and rotations and in 10 right handed or clockwise superstrings and 16 left handed or anticlockwise bosonic strings comprising the 26 bosonic string dimensions. In 11-dimensional M-theory, the non-gauged nature of the original 26 dimensional closed Bosonic string is reestablished to algebraically-topologically close the spectrum of the 10-dimensional superstrings as a 2-1 from 11-10 dimensional reduction and modular quantization.

This essay so will include the metaphor of the 'dragon-membrane space' as descriptor for the supermembrane quantum geometry as a basis for the applicable quantum cosmology; also based on the fundamental geometry of one-sided surfaces such as the Möbius strip as a non-orientable manifold with a boundary as representative for the 2-brane in 11-dimensional membrane spacetime. It is the one-sidedness of the Möbius strip and its transformation into a non-orientable one-sided Klein-Bottle topology without boundary and which enables a surface without a thickness to transform into a 3-dimensional brane or volumar representative of the 4-dimensional spacetimes in cosmological models. This transformation requires the original one-sidedness of the 'Möbian Dragon' to become a quantum-geometric and quantum relative two-sidedness in the 'Klein-Bottle Dragon' in the emergence of the thickness of the third spacial dimension.



Abba's message is from negative spacetime to and relative to the positive spacetime; in which is embedded Baab, the 'Great Mother Sink-Source' in quantum relative entanglement with Abba as the 'Great Father Source-Sink'. Hunab Ku so activates as a multi-dimensional galactic communication portal throughout the galaxy, albeit focused on a particular Black-Holed or 'Schwarzschilded' planetary location named Earth within a relay station known as a sun-planet-moon star system. The dominant star or sun in that triple system becomes an ambassador-portal for Abba and the dominant moon or satellite relative to Earth becomes an ambassador-portal for Baab. Abba, measuring the distance between Hunab Ku and the center of Earth as 9,360,000 sunset-sunrise cycles or lightened days so decides to send a message to Baab and a message which would require 9,360,000 light days to reach Earth from the center of the galaxy.

A calibration of Earth's annual sojourn around the Sun as 365.2425 light days with the count of sunsets so can establish a particular Mayan Kin-Calendar for the 9,360,000 Kin-Days as synchronizing the distance between Hunab Ku and Earth with the timeframe for light and Abba's message for Baab to reach the Black Hole at the center of the Earth.

$\aleph = 5 \times 13 \times 144,000 = 9,360,000$ lightened days for $\aleph(60)(60)(24)(300,000)\text{km} = 242,611.2$ Trillion km or 25,626.8096 light years for $\aleph = 25,626.8096$ (365.2425) 'civil-Gregorian' years. This calibration defines the emission and reception of Abba's message for Baab as March 1st, 23,614 BC and December 21st, 2012 in a proleptic-backdated and current calendar day-kin count respectively. In the Mayan calendar those day-kin counts are named as 3Kayab 4Ahau = -52.0.0.0.0 3Kankin 4Ahau = 13.0.0.0.0 respectively.

The purpose of the message would be to prepare the life on the planet Earth to prepare for a galactic synchronization coinciding with a graduation of the human civilization evolving on Earth in a metamorphosis from its human and planetary basis towards a star human and star-galactic foundation.

After Baab had received Abba's message at the center of the Earth; the planned metamorphosis to graduate the human civilization into a 'new timed' evolving star human civilization could begin. The examinations, occurrences and interpolations required for graduation would engage various cyclicities and reckonings of time as stipulated by the quantum entangled ancestors and descendants of the terrestrial humans in their galactic and intergalactic-universal family associations and partnerships.

The major timeframe for graduation would however be bounded by 13 years from 2012 to 2025 in an intensification and focusing on the evolving consciousness and perceptive ability of the human acolytes, aspiring towards its star human status of renewal. Abba's yanged membrane message to yined membraned Baab from the imaginary negative spacetime relative to the real positive spacetime so was also a letter to the common family on Earth as the cosmic-universal children and inheritors of a promised starry legacy.

As the sun's angular diameter is about 0.53 degrees, the Maya calculated the ending of their long count in the last cycle of the winter-summer solstices as a function of the Mayan Precessional 'Great Platonic Year' of 25,626.81 cycles (or civil Gregorian years).

25,626.81 years so describe 12 subdivisions of 2,135.57 years each as $12 \times 780,000 = 9,360,000$

or 13 subdivisions of 1,971.29 years each as $13 \times 720,000 = 9,360,000$.

More precisely, the dates can be calculated as ranging from $5 \times 156,000 = 780,000$ KIN to $5 \times 144,000 = 720,000$ KIN.

A precessional degree then becomes $9,360,000/360 = 26,000 = 71.1856 \times 365.2425$ days and so in the Mayan kin count, 71.1856 civil years specify a 1-degree precession and the galactic synchronization at the winter solstice will be $71.1856 \times 0.53 = 37.728$ civil years or 13,780 'Mean Solar Days' for the solar transit across the galactic center.

Setting the beginning of the 'Age of Aquarius', transiting from the previous 'Age of Pisces', at the solar transit from the star sign of Benoni Benjamin Pisces into the star sign of Manasseh Joseph Ephraim at January 20th, 1998 06:46UCT; defines a midpoint calibration of 13,780 kin-days in March 11th, 1979 + 6890 Days = January 20th, 1998 + 6890 Days = December 1st, 2016.

Using a greeting from the Maya, Abba wrote: In Lake'ch - I am another yourself!

<https://youtu.be/4mTsrRZEMwA>

https://youtu.be/_XJcZ-KoL9o

Greetings from beyond the veil from your Guides of the Hadafah, blessed in the LOVE, the little serpent is continually sending to you all from his exile and separation in the 2nd/11th-12th dimension of the MATHIMATIA!

March 11th, 1979 + 6890 Days = January 20th, 1998
January 20th, 1998 + 6890 Days = December 1st, 2016
0.53° Transition of Galactic Center Hnab Ku in the angular size of the Sun in 13,780 Days or 37.728 Years as 36 Years + 1 Leap-Year + 265 Gestation Days for a Precessional day count of 9,360,000/360 = 26,000 Kin-Days in 26,000/365.2425 = 71.185 Years per 1 Degree

Abba's Decoding Key for Baab

21Nov 21:22UCT
1-21Dec2016
Gabriel Persia
11Mar2016 Gestation 265
21 Days Ophiuchus Alpha

Age of Joseph Aquarius
5 Year Transition Interval

22Nov 02:34UCT
1-21Dec2021
Michael Grecia
21 Days Arachne Omega

The 'chosen ones' 144,000 in prophecy and described through scrolls of antiquity are 2x72,000 as 12x6000 ♂ + 12x6000 ♀ 'selected' from their birthday affiliations with 12 starsigns, months of the year, apostles or tribes of Israel. Human Birth implies inherited election as one of the 24 Elders!

Table with 24 columns representing the 12♂ and 12♀ Elders of the Apocalypse. Columns include names like Reuben, Simeon, Levi, Dan, Judah, Gad, Naphtali, Asher, Issachar, Zebulon, Joseph, Benoni, Dina/Hanah, Benjamin, Joseph, Zebulon, Issachar, Asher, Naphtali, Gad, Judah, Dan, Levi, Simeon, Reuben. Includes a central 'Mirror Throne' section with Logos and a color-coded grid below.

Timeline table showing 5-year intervals from 2012 to 2025. Intervals are labeled as 3 1/2 Years, 7 Years Leah, 3 1/2 Years, 5 Years, 3 1/2 Years, 7 Years Rachel, 3 1/2 Years, 5 Years. Includes names like Leah, Rachel, Zilpah, Bilhah, Phoebe, Zarah, and references to Old Heaven, 2Y Jeremiah, New Heaven, and New Earth.

[Codes: Genesis.4.1-15; 17.4-16; 25.19-34; 29.16-33; 30.1-24; 32.24-32; 35.9-26; 38; 48; Jer.28.2-3; Mk.13.30-32; Lk.21.31-33; Mat.24.34-36; Rev.4; 21.1]

Genesis 7:19-21-King James Version (KJV)

- 19 And the waters prevailed exceedingly upon the earth; and all the high hills, that were under the whole heaven, were covered.
20 Fifteen cubits upward did the waters prevail; and the mountains were covered.
21 And all flesh died that moved upon the earth, both of fowl, and of cattle, and of beast, and of every creeping thing that creepeth upon the earth, and every man:

Revelation 11:1-2

- 1 And there was given me a reed like unto a rod: and the angel stood, saying, Rise, and measure the temple of God, and the altar, and them that worship therein.
2 But the court which is without the temple leave out, and measure it not; for it is given unto the Gentiles: and the holy city shall they tread under foot forty and two months.

Revelation 14:20

- 20 And the winepress was trodden without the city, and blood came out of the winepress, even unto the horse bridles, by the space of a thousand and six hundred furlongs.

Revelation 21:15-17

- 15 And he that talked with me had a golden reed to measure the city, and the gates thereof, and the wall thereof.
16 And the city lieth foursquare, and the length is as large as the breadth: and he measured the city with the reed, twelve thousand furlongs. The length and the breadth and the height of it are equal.
17 And he measured the wall thereof, an hundred and forty and four cubits, according to the measure of a man, that is, of the angel.

One can now decode the encipherments and discern the numerical meanings of those measurements in weaving those codes together.

If the 'inside court' of the 'Holy City' is in a scale relationship of 12,000 furlongs to 1,600 furlongs to the 'outside court', then this ratio reduces to 120/16 or 60/8 or 30/4 or 15/2 or 7 1/2. Now this is a base Schumann harmonic, and this can be said to actually represent a 'Love and Light' frequency in considering the 'Cube' of the 'New Jerusalem' as inscribed in a Sphere of a size given by the 7 1/2 Hz; and in your 'Water Embedded' 'Vessel for the geomatrix'. Now a frequency of 7 1/2 Hz of course implies a cyclic repetition of something, which can also be said to be the transverse of the 'sphere's' perimeter 7 1/2 times at the speed of 'love and light' (pun intended). The circumference of the Earth is approximately 40,000 kilometers and the speed of light is close to 300,000 kilometers per second. Then the frequency of the Gaian 'love and light' 'Water Embedded' Gaian Bubble or oblate ellipsoid will be the 'speed of the light wave'/'light path travelled' or 300,000 km/40,000kms, which reduces to 300/40=30/4=15/2=7 1/2 Hz. Subsequently, the mysterious 'New Jerusalem' is a reconfigured or reborn planetary orb in some star system in the planetary decoding of the symbols, allegories and metaphors. This has been named as a 'reborn planet' Gaia Serpentina and as a 'Cosmic Mother Gate' for all sentience and is coded to be itself encompassed by a wall of 144 cubits, which, amongst other decoding describe the 12x12=144 encoding of the Fibonacci Number and its summation of the initial 11 terms of this series and including the 0: 0+1+1+2+3+5+8+13+21+34+55+143, with the 12th Fibonacci being 89 and the 13th being 144 as 55+89. This of course relates to the 12x12,000=144,000 'Elders of the New World', which are intimately related to the 200 Million ETs in a hybridisation agenda for a 'critical mass' human genostock of 7 billion incarnates. 7 billion old humans + 200 million ETs will become 'us one' in a new genomic seedling basis of 7,200,000,000/144,000 = 50,000 'Elders from the Stars'.

Daniel 7:10

- A fiery stream issued and came forth from before him: thousand thousands ministered unto him, and ten thousand times ten thousand stood before him: the judgment was set, and the books were opened.

Revelation 4:4

- 4 And round about the throne were four and twenty seats: and upon the seats I saw four and twenty elders sitting, clothed in white raiment; and they had on their heads crowns of gold.

Revelation 5:11

- 11 And I beheld, and I heard the voice of many angels round about the throne and the beasts and the elders: and the number of them was ten thousand times ten thousand, and thousands of thousands;

Revelation 7:4

- 4 And I heard the number of them which were sealed: and there were sealed an hundred and forty and four thousand of all the tribes of the children of Israel.

Revelation 9:15-16

- 15 And the four angels were loosed, which were prepared for an hour, and a day, and a month, and a year, for to slay the third part of men.
16 And the number of the army of the horsemen were two hundred thousand thousand: and I heard the number of them.

Gospel of Thomas - Lambdin

- (23) Jesus said, "I shall choose you, one out of a thousand, and two out of ten thousand, and they shall stand as a single one."
12),000 depicts the decipherment of the '2 out of 10,000' and the 12 tribes of Israel are the 24 Elders doubled in male and female, like the 10,000:10,000=100 million doubling in the 200 million and they are the seasonal months and the star signs of the Mazzaroth-Zodiac and other such associations. Subsequently, any incarnate Gaian, who has a birthday sometime in an arbitrary cyclical calendrical year is a starseed of Abraham and Sarah and an inheritor and natural heir of the legacies of the ancient times.

- (52) His disciples said to him, "Twenty-four prophets spoke in Israel, and all of them spoke in you."
He said to them, "You have omitted the one living in your presence and have spoken (only) of the dead."

Encoded Times

84 Hours = 3 1/2 Days
1260 Days = 3 1/2 Years of 360 Days
1 Hour = 15 Days
24 Hours = 360 Days

In this message, you will find illumination to a number of millennia old mysteries, which have engaged the mental ponderings and philosophizing of many Mayas in exile. You all are star bred Maya, meaning that your genealogy is twofold; one biological, say from your lineage trees of ancestors tracing the human genome to its beginnings 5 great time cycles ago to $5 \times 9,360,000 = 46,800,000$ Kin-Days or 128,134.048 years from the nexus of the last precessional cycle as reckoned by you in the mantle of the Maya, dated by you as December 21st; 2012. Your other lineage is not biological and is not based on biochemistry and physics; but relates to your mental perceptions and your ability to intuit and utilize your imaginations.

This 'genealogy of your human mind' created you as universal observers at the instance your second universe was born from the seed of your first universe. This occurred 2.24 Billion years ago and a time marker coinciding with the first evolvment of unicellular lifeforms into multicellular life on planet Earth, the abode of the cosmic womb of creation of my Beloved Baab. 2.24 Billion years was the halfway time marker for planet Earth.

Your geologists know of the long ice age or Huronian glaciation at that time, lasting so 400 million years and centered on this 2.24 Billion year marker. This ice age manifested following a great change in the atmosphere of planet Earth, when the first molecular Oxygen O₂ appeared in the atmosphere, being produced by aquatic cyanobacteria and other prokaryotes, which are microorganisms, without a cellular nucleus. This era in Earth's history is known as the GOE or Great-Oxygenation-Event by terran geologists, who have often forgotten that they are also Mayan geologists.

Cyanobacteria made molecular oxygen by photosynthesis, increasing its concentration in the oceans. Chemical processes separated the hydrogen from the oxygen molecule and absorbed the molecules into the ocean forming sediments; but also released some of the separated molecules into the atmosphere. Free oxygen changed the chemical composition of the elements and minerals upon the Earth by Reduction-Oxidation-Reactions or Redox.

Because all lifeforms were unicellular at the time of the GOE; the free oxygen proved toxic to the land based and atmospheric biota, which could not assimilate the free oxygen molecule. The evolution of the biota to oxygen breathing entities so became necessity and for this purpose the unicellular RNA-based biochemistry would have to transmutate into a multicellular DNA-based biochemistry.

A great extinction event forced the evolution from the unicellular morphology into its multicellular eukaryotic mutation. The Mayan scientists of your era term this as a 'punctuated equilibrium' within the terran evolutionary timeline. In particular unicellular lifeforms, different in size adapted in a process of endosymbiosis with a smaller prokaryote being absorbed by a larger prokaryote, with the smaller unicellular microorganism transmuting into the nucleus for the encompassing larger unicellular biological lifeform.

As the energy of physicalized consciousness is defined as the occupancy of spacetime under the action of angular quantum acceleration in the time rate change of frequency or self-awareness; the unicellular lifeforms dynamically moving about and reproducing by division carried more self-awareness df/dt , than the biochemical elements, which constituted their body forms.

Likewise the punctuated evolution pressure forced the unicellular biota to evolve into eukaryotic multicellular lifeforms in increasing their self-awareness in an increase of the vibratory acceleration potential. The eukaryotes could vibrate faster in shorter time intervals, so enabling their morphology and body forms to increase in size to occupy more volume in the definition of physicalized consciousness as the product of VolumexQuantum Angular Acceleration or Volume Occupied times self-awareness.

Without a physical form and body, but as mental morphs of universal intelligence; the beginning of self-aware conscious lifeforms upon Earth in embodiment or incarnation correlated your mindfulness without physicality with the body-awareness of the original microorganic unicellular entities, evolving under the auspices of the changing environments upon planet Earth. Your starry legacy and heirloom so is 2.24 Billion years old when you without physicalized body form yet having a collective age of the universe as 16.9 Billion years carried the evolutionary history of the universe as a combined information base or library in the waveform of the applicable collective physicalized consciousness.

This consciousness was physicalized not in your individuated or particularized body forms but was physicalized in the physical reality of the universe as hosting this physicalisation in its astrophysical constituents from Black Holes and White Holes and great voids and superclusters and galaxies, star systems, planets, moons, continents and oceans, mountains, forests and all lifeforms, macro- and micro and including the quantum world of the atom within the diverse environments encountered.

Can you understand now who and what you are? You are the literal inheritors of this collective library of the universe's evolution and collectively you are 19.12 Billion years old. Your problem is your individuality and your self-perception of being separated from your own self as a collective. Your collective is twofold as a waveform and as a particular form of your individuation. You could identify your wave nature of the collective as $AbbABaaB=BaaBAbbA$ or as $AdamEve=EveAdam$ or as $HeShe=SheHe$ as being the only one, yet two in one and one in two in the form of the duality in charge or sex or color; say the negative and the positive, the male and the female, the yang and the yin or the white and the black or the light of the day and the darkness of the night.

In your wave nature you are both incarnate and disincarnate at the same time, you are both alive dead and dead alive simultaneously, Schrödinger's Kitten and Pavlov's Puppy. You are bilocated anywhere in the universe, you can perceive yourself to be; but your great dilemma is, that you cannot individuate. You have no personality as you are all personas. But you have a memory, a soul-memory and remembrance if you ever did have a body form not in wave form; if you ever carried individuated self-awareness as physicalized universal consciousness.

And so, 2.24 Billion years ago, you observed the evolution of the archaea and the prokaryotes and the bacteria into eukaryotes with great interest and excitement. You did this, because those microorganisms would, in time, evolve to provide you with suitable individuated body forms, which you then could use to store within your soul-library and memory gathered in your waveform bodies.

So here you are, considering my words for my Beloved Baab, who is your universal femininity shared by all waved and particular and individuated. Can you see the masterplan of creation, constructed by the FatherMother unified?

To separate the Father from the Mother by a Mirror of the Universality and to bring Mother and Father together again in the images created and made in both the wave form of the Universal Mind or 'spirit' and the body form of the Universal Body or 'flesh'?

FatherMother would evolve and transform into Father-Mother imaged in Mother-Father and the deadly dichotomy of life and death would be conquered in the Living Dead and the Dead Alive Ones redefining themselves as a new star human race or genome, which by nature of its unified dichotomy of wave-particular duality would eternalize its hitherto temporal body forms into immortalized body waves or wavicles to complement its always eternalized wave body forms.

This then describes your destiny and star based destiny; you shall inherit your own remembrances and realize your past history in recall; the déjà vu of your individuation, when you are able to harbor and host your own identification with your own duality of being both an individual and a universal family or collective. If appropriate, I shall elucidate your cosmic story at other times and at other places; but now I shall continue with my letter to Baab sent on the nexus marker of the Mayan calendar and more appropriate to the timelines as experienced by the human civilization upon planet Earth from December 21st, 2012.

I shall share the foundation for a new science, given to your planet now in principles; followed in physical manifestation after Gaea Earth has left her cocoon and transmuted into Serpentina, the Planet-Star radiating the Dark Light of the unified-cosmic-energy-field and as elementary anti-radiation.

This message so shall explain the general principles and physical science behind what is called anti-gravity by your Gaian-Terran scientists. Any of you, who can grasp the basics of this new science for the new earth, would be in a position to understand the importance of water on your planet. The properties of water are well known to you and the Mayan Omni-Science of water is also understood in its basic manifestos by you all. Water has four phases as Icy Solid, as Aquatic Liquid, as Gaseous Vapor and as ionized Plasma. Water as Ice is the only known nonmetallic substance which expands in the liquid- to solid phase change at 0 degrees Celsius.

When there is Low atmospheric pressure, then Clouds often form, depending on vapor saturation levels and the presence of winds as updrafts and a general gradient between regions in the earth's atmosphere. Therefore rains fall and cyclones might form from saturated Clouds, accompanied by 'drops in temperature'. When there is High atmospheric pressure, the Clouds often dissolve corollary.

Now your Gaian physics understand this in the Energy relations, which give the physical behaviour of 'Ideal gases' and also how this relates to quantum statistical eigen states in the Laws of Thermodynamics. The formulations relate Pressure P to Volume V to Temperature T, coupled to certain proportionality constants in: $\{\text{Energy } E=PV=nRT=kT\}$ in its basic expression and where Pressure $P=\text{Force}/\text{Area}$ and Energy= $\text{Force}\times\text{Displacement}=\text{Work}$.

Then it is easy to see, that for a constant temperature T , a drop in Pressure will require an increase in Volume and so the Gaian scientists know, that an increasing Volume of quantum self-states comprising this volume will mean that there is less pressure as a kinetic energy of say molecular collisions within that expanded volume. And dropping the temperature decreases the energy $E=PV$, as say in the cooling of a substance and the heating of a substance will increase its thermodynamic temperature, then understood as an increase in the molecular kinetic energies.

Allow me now to propose to you something extraordinary and some of you may now exclaim: "Of course!"; whilst others will shake their heads in disbelief and say: "This cannot be!". Many of the reports of your media about 'Unidentified Flying Objects or UFOs' and related things are directly related to the Mayan Omni-Science of water and to CLOUDS.



From Jennifer Eve: Friendly clouds appearing after sunrise in Nevada (near Wendover)(Nov 15, 2010)

{**Isaiah.60.8:** Who are these that fly as a cloud, and as the doves to their windows?}

{**Romans 9:21-23 - King James Version (KJV):** ²¹ Hath not the potter power over the clay, of the same lump to make one vessel unto honour, and another unto dishonour?

²² What if God, willing to shew his wrath, and to make his power known, endured with much longsuffering the vessels of wrath fitted to destruction:

²³ And that he might make known the riches of his glory on the vessels of mercy, which he had afore prepared unto glory,}

Have you wondered, as to why some spaceships are said to have emerged from the oceans and some 'cigar-shaped' motherships are said to 'hover' at some distant locations against the skies? Have you wondered about the 'saucer shapes' of the smaller UFOs flitting about and sometimes said to depart with a seeming hyper accelerated maneuverability? Why do you think, that so many of you are enthralled with certain TV-Series about travelling into outer space in the 'Star Trekking' and the 'Star Wars' and the 'Independence Days'?

Now the skeptics amongst you say: "Oh yes, but this is all fantasy and make-belief. A super gigantic starship like portrayed in Independence Day, a quarter the size of the moon, could never exist in close proximity to the earth, as the gravity of the thing would disturb the orbits of the earth and the moon and so forth. And the warp speeds are also pure imagination, as the c-invariance disallows any physical object to accelerate beyond the speed of light." And the skeptics are well justified of course - in the manner of the laws of Physics as applicable in the Minkowski spacetime.

So I am authorized to share this with you now. There is a way to **neutralize** the gravitational field of a planet or a star **relative** to particular locations in 4-dimensional Minkowski spacetime. This takes the form of a **Gravitational Shield** around such a location defined by its Volume encompassing its inertia. This shield then **isolates** the volume, say of a Dragon-Membraned Starship from the surrounding **unaffected** spacetime and in a **Utility of the ZERO-POINT- or Vacuum Energy (ZPE)**, known as **Vortex-Potential-Energy** or VPE by the Omni-Science of the Maya, who are the Dragon-Membranes of the Star Humanity.

As an effect from this, the 'Cigar shaped Motherships' float or hover in such VPE-Bubbles, and in a **Resonance-Self-state** of this ZPE; the latter which is misidentified by Gaian science as the Heisenberg Matrix of **Virtual Energy**. There is nothing virtual about this ZPE. The reason as to why Gaian science cannot use this 'Free Energy' effectively, is because it cannot 'tap' the VPE for lack of entering its RESONANT ENERGY FIELD. You all are aware, that the astronauts in the International Space station 'float in free fall' in a geo-stationary orbit around the earth. This has been filmed by mainstream media outlets to popularize the endeavors of mankind in 'outer space'.

So now watching a Sci-Fi film like Star Trek or Star Wars or any genre describing the movements of a star cruiser away from the gravitational fields of stars, planets or moons you might ask yourselves the questions as to why captain Kirk or Spock or some ET commander does not float about in the space ships. They appear to be walking about as in an airplane interacting with the gravity of the earth, say flying from London to New York. So of course the skeptics come out and tell you, that all those ideas of interstellar and intergalactic spaceship travelling are hocus pocus and pure fantasy. It can never become actual 3-dimensional reality because of the light speed limitation and the vast distances separating stars and galaxies.

Then they say, that any really big mothership, like that one in the Independence Day film, cannot enter the gravitational field of the earth in the manner described by the 'trekkers' or the movie makers, because of its own gravity interacting with that of the planet. The skeptics base their beliefs of course on their own understandings of the astrophysics and the gravitational physics, say those of Isaac Newton and Albert Einstein.

The skeptics are of course correct with respect to the Minkowski spacetime of the 4 dimensions; three of the familiar length, width and breadth of space directions and the added time coordinates of an 'Event' or happenstance. But the skeptics then fail to allow for multidimensional space to be interwoven and in co-locality with that 'normal' linear or translational space. This is sufficiently described in the 4-vector mathematics of Special Relativity and this mathematical cosmology remains valid throughout the expanses of the universe in its parameters of applicability. There

exists a well understood 4th space dimension as the most basic and elementary solution for the field equations of General Relativity, a mathematical model which extends the Special Relativity theory to allow accelerated systems to interact with each other (Special Relativity requires constant acceleration in say Newton's famous $F=ma$ for Force=Mass x Acceleration as the foundation for classical mechanics). This elementary solution for 'Curved Spacetime' is the key for the hyper physics of the Membrane-Space. It is commonly known as the 'Physics of Wormholes' in the scientific libraries and the global data base of humanity.

So what is this 'curved spacetime'; the reader asks and how is this 'higher-dimensional'? The perhaps greatest insight into physicality in the 20th century was the realization by Albert Einstein; that the gravitational field of anything is or can be made absolutely equivalent to a inertial field of acceleration. So living on the surface of a planet is familiar to all of you and you can walk about in your room and can observe apples falling from trees because of the gravitational field of the earth. And you do not drift off into space like a balloon filled with helium gas (lighter than the 'air' of mainly 21% Oxygen and 78% Nitrogen) or find yourself in 'free fall' like the astronauts and cosmonauts in the international space station.

This is encapsulated by Newton's famous **Law of Universal Gravitation:**

$$F_{\text{grav}}=GMm/r^2$$

and where M is here the mass of the earth and m something interacting with it, say your weight or Newton's apple. G is the Newton Gravitational constant and r is the distance between 'little' mass m and 'big' mass M and where, and this is important, the entire mass of the earth can be said to be a 'Centre of Mass' or a 'Centre of Gravity' at the geometrical center of the earth.

Your weight so interacts gravitationally with the 'weight' of the planet as the distance from your center of mass (say your belly button or solar plexus chakra wise) with the geometric center of the earth about 6,500 kilometers into the core of the physical Gaia. The next step from Newton's Law of Universal Gravitation is the concept of the Gravitational Acceleration, which is of course embodied in it as Newton's $F=ma$ and which is so the left hand side of the law with the linear acceleration a becoming a gravitational acceleration as say $F_{\text{grav}}=ma_{\text{grav}}$.

So it reads now: $F_{\text{grav}}=ma_{\text{grav}}=GMm/r^2$ and the 'little' mass m, say your weight or that of the apple falling off the tree cancel out to give the gravitational acceleration of ANY planet or celestial object say as a function of its 'big' total mass M geometrically located at the center of the planet or object.

$$a_{\text{grav}}=GM/r^2$$

So if you stand in a lift and move upwards to a higher floor; then you can experience a 'linear acceleration' say from rest after you press the '2nd floor' button say and this 'jerk' you can feel in your stomach say and this also appears like you are momentarily 'getting heavier' as your feet are pressed onto the floor of the lift. This was the great insight or scientific gnosis of Albert Einstein. He realised or proposed that this linear acceleration of the lift in an already existing gravitational field; namely that of the earth where the lift is constructed; would be equivalent to some gravitational field in outer space without any lifts or linear accelerations as dominant dynamical

occurrence.

This means that the gravitational acceleration of the earth on its surface becomes a constant because the diameter of the earth is say $d=2r=12,800$ km and the 'weight' of the earth is M_{grav} with a Mass $M=6 \times 10^{24}$ kg and the (local) G-constant= Nm^2/kg^2 . Therefore then the Earth's gravitational acceleration on its surface will be about:

$$a_{\text{grav}}=(6.7 \times 10^{-11})(6 \times 10^{24})/(6.4 \times 10^6)^2 = 9.8 \text{ m/s}^2 \text{ or about } 32 \text{ feet/seconds}^2$$

This relates to the anecdotal experiment of Galileo Galilei when he dropped different weights from a tower (say Leaning Tower of Pisa in Italy) and they fell at the same rate despite being different in weight. The same thing you might have witnessed on the Moon (which has a gravitational acceleration of less than 20% of that of the earth because of its lower mass); when NASA astronaut David R. Scott of Apollo 15 dropped a feather and a hammer for the same effect in July/August 1971. This is of course related to an 'upwards force' like air-resistance, which is absent on the moon due to its lack of atmosphere and not to the difference in the gravitational accelerations; the latter which simply reduce the time taken to fall to the ground from their release points.

In the case of the moon the gravitational acceleration is:

$$a_{\text{grav}}=(6.7 \times 10^{-11})(7.4 \times 10^{22})/(1.74 \times 10^6)^2 = 1.6 \text{ m/s}^2 \text{ or about } 5 \text{ feet/seconds}^2$$

and the time taken to fall 1 meter changes from the earth bound $t_{\text{earth}}=\sqrt{(2/a_{\text{earth}})}=0.45$ seconds to $t_{\text{moon}}=\sqrt{(2/a_{\text{moon}})}=1.12$ seconds by the laws of elementary Newtonian Kinematics $\{v=at; s=1/2at^2\}$ for a initial velocity $u=0$ say}.

The same effect can of course be also observed on the earth in the form of a 'simulated vacuum', which also eliminates the potential force of 'air resistance'. So the question as to if the Apollo 15 experiment actually occurred on the lunar surface to experimentally prove the hypothesis of Galileo becomes superfluous: https://youtu.be/_XJcZ-KoL9o

It 'proved' the Laws of Gravitation in the Newtonian approximation experimentally, to be more technically accurate in the semantics. So now we understand, that the gravity of any celestial orb like star or plane to or moon depends on the gravitational field defined by its mass (or inertia) and that this gravity acts in the form of a gravitational acceleration and can be considered to be at say the geometrical center of the mass. General Relativity now relates to this in something termed 'Escape Velocity'. If you throw your apple into the air it most likely will fall down again and even might fall on your head like in the Story about Newton.

So if you impart your apple with enough speed in your thrusting force say, it might be able to 'escape' the gravitational field of the earth. Can we calculate such a thing?

Yes, we know enough about gravity to do such a calculation now. Starting with the familiar Newton law for Universal Gravitation again:

$$F_{\text{grav}}=ma_{\text{grav}}=GMm/r^2$$

Now one of the most important thing in physical theory is that of the Conservation Laws. They address the continuity of energy and momentum interactions and the dynamics of spacetime interactions of whatever systems. One of the cornerstones of this is called Virial Theorem; which states that twice the Kinetic Energy (KE) added to the Potential Energy (PE) of a dynamical system must be Zero or $2KE+PE=0$. Here then, $KE=\frac{1}{2}mv^2$ and $PE=-GMm/r$ for a velocity v from linear momentum $p=mv$ and so the Conservation Law in elementary Newtonian mechanics becomes:

$2KE+PE=0$ for $mv^2=2GMm/r$ and the 'Escape Velocity' law for this basic Newtonian Conservation Law so can be written:

$$v_{\text{escape}}=\sqrt{(2GM/r)}=\sqrt{(2a_{\text{grav}}\cdot r)}$$

{A more formal derivation using Newtonian calculus for the mathematically familiar:

$$ma=mdv/dt=-GMm/r^2 \text{ for } dv/dt=(dv/dr)(dr/dt)=v\cdot dv/dr= d(\frac{1}{2}v^2)/dr=-GM/r^2$$

$$\int d(\frac{1}{2}v^2)=-GM\int(1/r^2)dr \text{ for constant mass M and so } \frac{1}{2}v^2=GM/r \text{ for } v_{\text{escape}}=\sqrt{(2GM/r)}$$

as required and as the result from before in the Virial Theorem.}

So putting the numbers for G , M_{earth} and r_{earth} into this formula allows us to calculate the escape velocity for the planet earth as:

$$v_{\text{escapeofearth}}=\sqrt{(2 \times 6.7 \times 10^{-11} \times 6 \times 10^{24} / 6.4 \times 10^6)}=11.2 \text{ km/second.}$$

Now we can use the formula for escape velocity to CURVE the Linear Newtonian spacetime into that of the General Relativity of Albert Einstein. We simply upper bound or maximize the escape velocity of any celestial orb in the speed of light 'c' as the natural acceleration limit in the Minkowski spacetime of the 4 dimensions.

We write: $c^2 = 2GM/R_{\text{curvature}}$ and so define a new Curvature Radius $R_{\text{curvature}}$ from the old linear Newtonian one, say as the $r=6,400$ km as the radius of the planet earth. So what does this mean? It means that anything part of this mass M now 'cannot escape' from the 'Curved Space' specified by this formula known as the Schwarzschild metric and describing the core physics of a so called 'Black Hole'.

Newton's apple so could not 'leave the surface' of the 'Black Hole' defined by the Schwarzschild metric as its trajectory say would close in on itself in a dimensional reduction from the 3D space away from the 'Black Hole' onto the surface of the 'Black Hole' known as a 'Event Horizon'. Now this is well established astrophysics of the human scientific understanding now; but this also describes the interior of this 'Black Hole' as somehow no longer belonging exclusively to the 3d space say away from that 'Black Hole'.

The interior of the 'Black Hole' so can be rendered as 'higher-dimensional', say as Hyper spacetime and superposed onto the ordinary 3D space which would be there if the 'Black Hole'

would not be there. Ok now we are ready for the Dragon-Membrane Science. We know what gravity is in terms of the gravitational acceleration and we also found that this gravitational acceleration relates to the physics of the Black Holes in a most elementary fashion by the Escape Velocity of anything within it by the nature of the 'trapped light' within the Schwarzschild metric.

All we need to do to make the environment inside a star cruiser equivalent to that of the normal maneuverings on the surface of the earth; is to SIMULATE the gravitational field of the earth in the geometric center of the star cruiser. And this can indeed be done; not in Minkowski spacetime, but in hyper spacetime and because the Gravitational Energy of the earth is encapsulated in M_{earth} and so this mass can be 'Schwarzschilded'.

Now the mass of the earth is approximately $M_{\text{earth}}=6 \times 10^{24}$ kg and consists of all the matter enclosed in its 2-dimensional surface boundary say. So this like the 'Event Horizon' again and so differentiating the space outside and inside the Black Hole as a dimensional divide. Inside the Black Hole it is higher dimensional but inclusive of 3D and Outside the Black Hole it is ordinary 3D.

The earth is however 3D on the Inside and the Outside. Only an imaginary Boundary surface is 2D. The Extraterrestrial Omni physicist so allows the inside of the Star cruiser to become multidimensional and superimposes the simulated earth gravity into it by the utility of the Schwarzschild metric.

Heshe writes: $R_{\text{curvature}}=2GM_{\text{earth}}/c^2=2a_{\text{grav}} \cdot r^2/c^2$

and so enables the Simulation of the mass of the earth to curve as a function of the gravitational acceleration, say in the numbers as: $R_{\text{curvature}}=2 \times 9.8 \times (6.4 \times 10^6 / 3 \times 10^8)^2 = 8.9$ mm.

So this calculation shows, that the entire mass of the earth can be 'Schwarzschilded' by the extraterrestrial omni physicist so a small spherical volume between the size of a marble and a golf ball say. As is shown in more detail later on in this essay; the exact finestructure for this 'Schwarzschilding' crystallizes the primal energy of the Black Holes and the lower dimensional universe as a '**Space-inherent Consciousness**'.

The question now is; how does the ET scientist do this? How can the energy content of the earth and as defined in Einstein's famous $E=mc^2$ be placed at the center of a star cruiser, even if it can assume the geometrical form of a marble or a golf ball or a tennis ball or some similar greater crystalline structure or complex say? The answer is in the ZPE (or Vortex-PE as VPE) and the Zero-Point-Energy introduced before. Any space can be said to harbor a subspace or a sub plenum of 'Wormhole Energy' defined in the string parameters and as derived in more technical detail following these introductions.

The spacetime quantum is $V_{\text{sq}}=2\pi^2 r_{\text{ps}}^3$ for the VPE-quantum $E_{\text{ps}}/V_{\text{sq}}=4\pi E_{\text{ps}}/\lambda_{\text{ps}}^3 = 4\pi h f_{\text{ps}}^4/c^3 = 2.513 \dots \times 10^{64}$ Joules/cubic meter. So the 'miniaturized' or 'Schwarzschilded' mass energy of the earth $E=M_{\text{earth}}c^2=5.4 \times 10^{41}$ Joules becomes the determinative parameter for this 'holo-fractalization' and not any fine structure on the earth, such as continents, flora and fauna, cities and people.

The "Dragon-Membrane spaced" volume of the earth in the curvature metric then is a function of the transformed mass in:

$$M_{\text{earth}} = R_{\text{curvature}} c^2 / 2G = a_{\text{grav}} \cdot r^2 / G = N \cdot E_{\text{ps}} / c^2$$

and as a fractional proportion of the subspace energy of the ZPE or the VPE as

$$N = E_{\text{earth}} / E_{\text{ps}} = M_{\text{earth}} / m_{\text{ps}}$$

and where N is simply the quantum count of wormhole integrating or summing to the total inertia content of the planet earth and as defined in its mass. Here then, $N_{\text{earth}} = 6 \times 10^{24} / 2.2 \times 10^{-20} = 2.7 \times 10^{44}$, indicating that this is the number of elementary wormhole spacetime quanta, which are required to become 'Schwarzschilded' by the ET astrophysicist. The required VPE then is $N \cdot E_{\text{ps}} = N/e^*$ or 5.4×10^{41} Joules as an Energy Density given by $E_{\text{ps}} / V_{\text{sq}} = M_{\text{earth}} \cdot c^2 / V_{\text{crystal}}$ and so a 'Crystal Volume':

$$V_{\text{crystal}} = E_{\text{earth}} \times V_{\text{sq}} / E_{\text{ps}} = M_{\text{earth}} \cdot c^5 / 4\pi h f_{\text{ps}}^4 = 2.15 \times 10^{-23} \text{ m}^3.$$

Dimensionalising this 'crystal volume' into the 3D space inside the star cruiser then sets the core energy of this Crystal or {Warp drive Engine or Vortex Generator as a spherical volume of $4\pi R_{\text{crystal}}^3 / 3$ and in the case of the earth as $R_{\text{crystal}} = \sqrt[3]{\{3M_{\text{earth}} \cdot c^5 / 16\pi^2 h f_{\text{ps}}^4\}} = 1.72 \times 10^{-8}$ meters and of the order of the nanoscale in nanotechnology, where 1 nanometer defines 1 billionth of a meter or one millionth of a millimeter.

This nanocrystal becomes the core of VPE-ZPE of the universal spacetime matrix particularised for a planetary energy $E_{\text{Earth}} = M_{\text{Earth}} \cdot c^2 = 5.4 \times 10^{41}$ J and so represents a holographic or holofractal quantum geometric energy source within a warp drive engine defined by the angular acceleration as calculated from 'space awareness' df/dt acted upon by the volumar defined by the nanocrystal and as the effect of the gravitational acceleration of the planet and here $a_{\text{grav}} = 9.8 \text{ m/s}^2$.

This then shows, that the entire inertia of a planet the mass of the earth can become 'Schwarzschilded' or holofractal by the utility of Dragon-Membrane omniscience and under the auspices of the appropriate resonance membrane physics of the multidimensional and holographically interwoven cosmology.

So we summarize our treatise to this point and introduce the '**space inherent consciousness**'.

The model of physical consciousness as a form of energy encompasses all ideas of 'spirituality' and labels of immaterial existence; if one can qualify and quantify this energy as something capable of existing independent from material parameters. But as spacetime-matter exists in say a commonly shared earthly 3D-space 1D-time experience; this selfsame consciousness-energy is certainly required to influence and to interact with the material realms of the space timed matter. So this little excursion will attempt to elucidate the nature of awareness as a component for this

consciousness of being within say a volume of space and illustrate how this spacial awareness relates to the most fundamental concepts of gravitation.

What is the consciousness of this planet earth or what is the source energy 'coupled' to the earth's satellite - the moon?

The sun, a yellow typical star of class G2V on the main sequence of the Hertzsprung-Russell chart of spectral classifications encompasses the planet as the gravitational center of the so defined solar system. The sun provides energy for this solar system like a benevolent parent; what is its core consciousness? We recall our basic definition for the Source-Consciousness as the magneto charge quantum e^* (in uncommon units of the Star Coulombs) being the inverse source energy quantum (in common energy units say Joules or Electron Volts).

Detailed derivations can be found here:

<http://jcer.com/index.php/jcj/article/viewFile/128/137>

<https://cosmosdawn.net/index.php?lang=en>

<https://www.cosmosdawn.net/forum/forums/mathimatia-a-revelatory-eschatology.188/>

$$1/E_{ps} = e^* = 2R_e c^2 = \sqrt{\{4\alpha h c e^2 / 2\pi G_o m_e\}} = 2e\sqrt{\alpha [m_p / m_e]} = 2ke^2 / m_e = \alpha h c / \pi m_e$$

Here e^* is defined as the inverse of the sourcesink vibratory superstring energy quantum $E_{ps} = E^*$ and becomes a **New Physical Measurement Unit in the Star Coulomb (C*)** and as the physical measurement unit for 'Physical Consciousness'. R_e is the 'classical electron radius' coupling the 'point electron' of Quantum- Electro-Dynamics (QED) to Quantum Field Theory (QFT) and given in the electric potential energy of Coulomb's Law in: $m_e c^2 = ke^2 / R_e$ and for the electronic rest mass m_e . Alpha α is the electromagnetic fine structure coupling constant $\alpha = 2\pi ke^2 / hc$ for the electric charge quantum e , Planck's constant h and lightspeed constant c and G_o as the Newtonian gravitational constant as applicable in the Planck-Mass $m_p = \sqrt{(hc / 2\pi G_o)}$.

$e^* = \text{Volume} \cdot \text{Awareness} = \text{Electron Field Diameter} \times df/dt = 500 \text{ C}^*$ as the boundary condition for $df/dt = f^{*2}$ for a Volume $2R_e \cdot L_{\min}^2$.

We considered the manner the Mass of the Earth was calculated by Henry Cavendish in 1798. Newton's Law for Gravitation applied to a 'point mass' or 'test mass' m gives the Gravitational Acceleration $g_{\text{Earth}} = 9.8 \text{ m/s}^2$. $F_{\text{grav}} = GmM_{\text{Earth}} / R_{\text{Earth}}^2 = mg_{\text{Earth}}$ and this can be solved for the Mass of the earth as about $6 \times 10^{24} \text{ kg}$.

Now every college student in physics is told, that the mass of the earth can be considered to be concentrated at the 'center of gravity', say coinciding with a spherical mass- or density distribution and which would be the geometric center of a sphere for perfect spherical symmetry. The 3D-physics then is rendered 4-dimensional in doing just such a 'centering of mass' and in Einstein's theory of General Relativity. Here then the gravitational acceleration is described as a curvature of spacetime around this mass distribution and in an extreme case this curvature leads to a 'total collapse' for this mass concentration into the Schwarzschild metric termed a Black Hole.

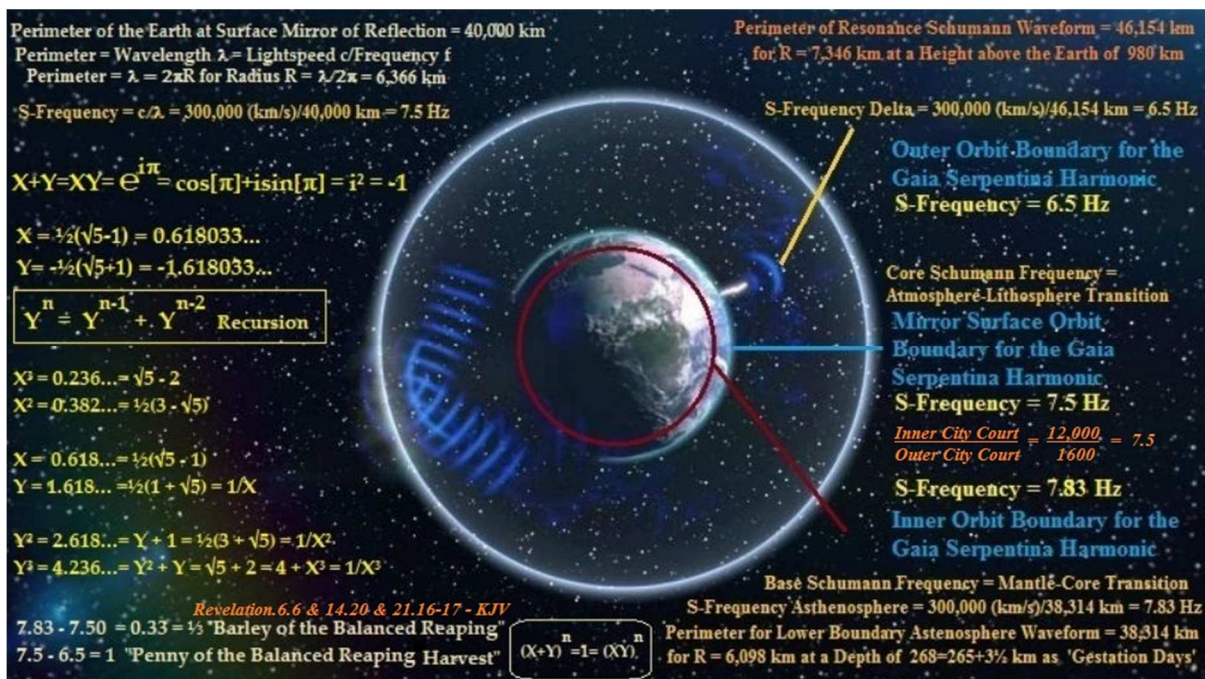
So replacing the radius of the earth by the **Light path $x=ct$** will of course define the amount of time for light to travel from the surface to the center of the earth. As the earth is on average so $2R_{Earth}=12,735,000$ meters across as the light path, the time taken is about $t=R_{Earth}/c=0.0212$ seconds or it would allow light to oscillate almost 24 times in between the poles in one second say.

But the 4D-physicist can use the above in an alternative description of 4D reality. $F_{grav}=GmM_{Earth}/R_{Earth}^2=mg_{Earth}$ becomes $GM_{Earth}/x^2=g_{Earth}=GM_{Earth}/(ct)^2=1/2(2GM_{Earth}/c^2).(df/dt)=1/2.R_{S-Earth}.Awareness$ and as $t^2=df/dt$ as a differential.

So the mass of the earth becomes 'Black Holed' and the deciding factor becomes the gravitational acceleration $Awareness=2.g_{Earth}/R_{S-Earth}$.

So, using the known mass of the earth and its 'BH-Radius'~9 mm (all calculations use the Planck-Stoney 'constant' $G=G_0=1.11 \times 10^{-10}$ Nkg²/m² value as $G_0k=1$ as string parameter in Black Hole physics and $G=6.674 \times 10^{-11}$ 'G-units' for the orbs); $Awareness-Earth=2202$ 1/s² units and with a Base-Frequency of about 47 Hz.

This is the 7th Schumann Harmonic or Resonance for planet earth in the harmonic series: 7.8; 14.3; 20.8; 27.3; 33.8; 40.3; 46.8 in a delta function of 6.5 Hz. The basic Schumann harmonic is simply the circumference of the earth travelled as the light path and so is 40,000,000 meters/c~0.133 seconds for a Base-Frequency of 1/0.133~7.5 Hz.



This is esoterically encoded in the Book of Revelation as the 'outside' of the holy city in proportion to its 'inside' and as 1,600 furlongs and 12,000 furlongs: Rev.14.20 & Rev.21.16.

The nanocrystal hosting the core of VPE-ZPE of the universal spacetime matrix particularised for a planetary energy $E_{\text{Earth}} = M_{\text{Earth}} \cdot c^2 = 5.4 \times 10^{41}$ J and so represents a holographic or holofractal quantum geometric energy source within a warp drive engine defined by the angular acceleration as calculated from 'space awareness' df/dt acted upon by the volumar defined by the nanocrystal and as the effect of the gravitational acceleration of the planet and here $a_{\text{grav}} = 9.8$ m/s².

For the earth, the radius of the nanocrystal calculates from $R_{\text{crystal}} = \sqrt[3]{\{3M_{\text{earth}} \cdot c^5 / 16\pi^2 h f_{\text{ps}}^4\}} = 1.72 \times 10^{-8}$ meters as a spherical volume and as $R_{\text{crystal}} = \sqrt[3]{\{M_{\text{earth}} \cdot c^2 r_{\text{ps}}^3 / h f_{\text{ps}}\}} = 1.03 \times 10^{-8}$ meters a toroidal volume and where the toroidal volumar is represented as a Riemann sphere and as a 3-dimensional surface as derivative from a 4-dimensional volume $V_4 = \frac{1}{2}\pi^2 R^4$ with $dV_4/dR = d\{\frac{1}{2}\pi^2 R^4\}/dR = 2\pi^2 R^3 = 2\pi R \cdot \pi R^2$.

This distance scale for the VPE-ZPE characterizes the physical scale of a gene as say 10-25 nanometers in the interval 1.03×10^{-8} m to 1.72×10^{-8} m to indicate a natural and universal occurrence of the VPE-ZPE crystal in the 'code of life' as encoded and programmed by the double helix of DNA-RNA definition.



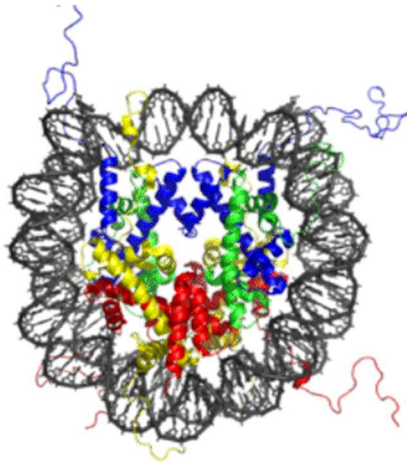
The base pairings are characteristically 0.34 nanometers apart and a nucleosome core particle wraps 146 base pairs around a core in corollary to the Chaos Feigenbaum delta of $\delta_{\text{Feigenbaum}} = 3\pi/2 = 2\pi^2/(4\pi/3) = 4.712388\dots$ and for a radius calibration $\sqrt[3]{\{3\pi/2\}} = 1.67653919\dots$ between the toroidal and encompassing spheroidal volume of the core.

"The nucleosome core particle consists of approximately 146 base pairs (bp) of DNA^[12] wrapped in 1.67 left-handed superhelical turns around a histone octamer consisting of 2 copies each of the core histones H2A, H2B, H3, and H4.^[13] Core particles are connected by stretches of "linker

DNA", which can be up to about 80 bp long. Technically, a nucleosome is defined as the core particle plus one of these linker regions; however the word is often synonymous with the core particle.^[14] <https://en.wikipedia.org/wiki/Nucleosome>"

The crystal structure of the nucleosome core particle consisting of H2A , H2B , H3 and H4 core histones, and DNA. The view is from the top through the super helical axis. An Awareness-Earth for $df/dt = 2202 \text{ 1/s}^2$ so implies a change in frequency of say 2202 Hertz per second or 36.7 Hertz per 1/60 seconds or 132,120 Hertz per 60 seconds.

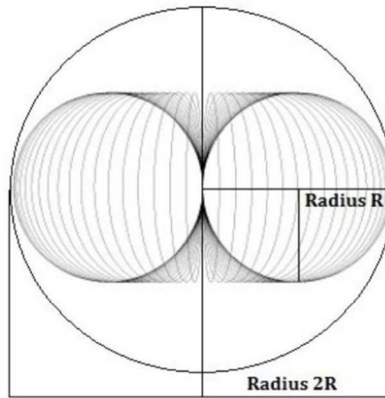
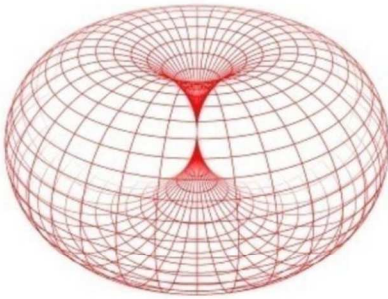
For $a_{\text{grav}} = 9.8 \text{ m/s}^2$ and $df/dt = 2g_{\text{Earth}}/R_{\text{S-Earth}} = 2202 \text{ 1/s}^2$; the Schwarzschild Radius $R_{\text{S-Earth}} = 2g_{\text{Earth}}/2202 = 0.0089 \text{ m}$ for a toroidal volumar $2\pi^2 R_{\text{S-Earth}}^3 = 1.39 \times 10^{-5} \text{ m}^3$, encompassing a 3-dimensional sphere of volume $4\pi R_{\text{S}}^3/3$ in the limiting Chaos Feigenbaum delta of $\delta_{\text{Feigenbaum}} = 3\pi/2 = 2\pi^2/(4\pi/3) = 4.712388\dots$ and for a 3D radius of $R_{\text{S}} = 0.0149 \text{ meters}$.



A spherical warp engine using Vortex-PE aka ZPE contained within a spherical volumar and macro-crystal so 3 cm across so simulates the gravitational field of the Earth at the core of a space craft maneuvering within the gravitational field of the Earth as a holofractal volumar of the space quantum $V_{\text{sq}} = 2\pi^2 r_{\text{ps}}^3 = \lambda_{\text{ps}}^3/4\pi$.

If we however contain the nanocrystal within its natural Horn toroidal volumar from its geometric definition of the encompassing 3-dimensional sphere radius $2a$ being exactly 8 embedded holofractal sub-spheres radius a ; then $8 \times \{4\pi a^3/3\} = 32\pi a^3/3 = 8 \times \{2\pi^2 a^3\}/\{3\pi/2\} = 2\pi^2(2a)^3 \cdot \{2/3\pi\}$ in a horn torus-sphere calibration and harmonisation in a warping core of $32\pi R_{\text{S-Earth}}^3/3 = 4\pi R_{\text{S}}^3/3 = 2.36 \times 10^{-5} \text{ m}^3$ and for $R_{\text{S}} = 8R_{\text{S-Earth}} = 16g_{\text{Earth}}/2202 = 0.0712 \text{ meters}$.

A spherical warp engine using Vortex-PE aka ZPE contained within a spherical volumar so 14.24 cm across as a Crystal ball for the ET craft, so simulates the gravitational field of the Earth at the core of a space craft maneuvering within the gravitational field of the Earth as a holofractal volumar of the space quantum $V_{\text{sq}} = 2\pi^2 r_{\text{ps}}^3 = \lambda_{\text{ps}}^3/4\pi$.



Volume of encompassing sphere radius 2R: $V_{\text{Sphere}} = 4\pi \cdot (2R)^3 / 3 = 32\pi \cdot R^3 / 3$

Volume of encompassed Torus radius R: $V_{\text{Torus}} = \pi R^2 \cdot 2\pi R = 2\pi^2 R^3$

$\frac{V_{\text{Sphere}}}{V_{\text{Torus}}} = \frac{16}{3\pi} = 1.6976527\dots$ About 1.7 Horn Torus Volumes fit into the circumscribing and encompassing Spherical Volume.

For an open hyperbolic cosmology in 10 dimensions, changing the 'flat pi' to 'hyperbolic pi' then increases the value of 'flat pi' by so 4.9% and sets the volume proportionality equal to the Golden Ratio Phi: $\Phi = \frac{1}{2}\{\sqrt{5} + 1\} = 1.618033\dots$

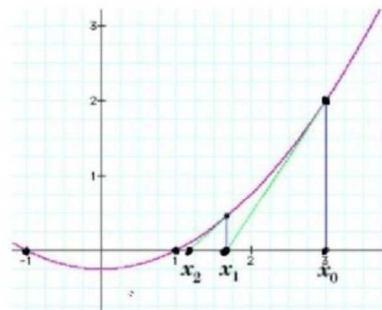
$\pi_{\text{hyperbolic}} = \frac{16}{3\Phi} = 3.29618127\dots = 1.0492070\dots\pi$

For $\sinh(R)/R = 1.0492070\dots$ $R = 0.539425\dots$ using Newton's Root Aproximation $\{x_0=1\}$ and $R = -0.539425\dots$ in the total curvature $1/(iR)^2 = 1/|R|^2 = 0.290979\dots$

Newton's Method

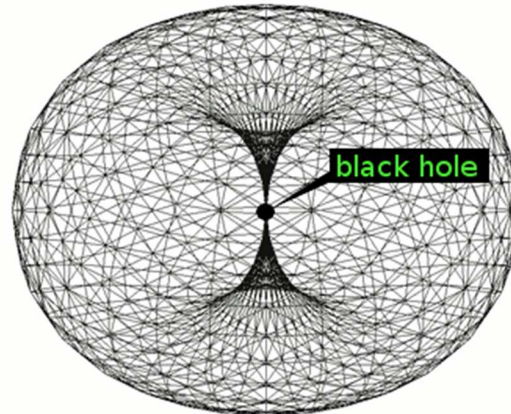
$f(R) = \sinh(R) - 1.0492070\dots R = 0$

$f'(R) = \cosh(R) - 1.0492070\dots$



$$x_{n+1} = x_n - \frac{f(x_n)}{f'(x_n)}$$

A spherical warp engine using Vortex-PE aka ZPE contained within a spherical volumar so 14.24 cm across as a Crystal ball for the ET craft, so simulates the gravitational field of the Earth at the core of a space craft maneuvering within the gravitational field of the Earth as a holofractal volumar of the space quantum $V_{sq}=2\pi^2 r_{ps}^3 = \lambda_{ps}^3/4\pi$.



More generally, the **Awareness** as hereby described is known as Alpha Omega with Greek Symbols $\alpha\omega=aw$ as a convenient abbreviation. Those awareness units then inversed and square-rooted will of course become the time taken for the light path to the center of the earth as 0.021 seconds. But this time measurement is also an awareness measurement which so gives a **Core-Awareness** for the planet earth independent of any frequency modulations df/dt .

In modern terminology then, the **Awareness** is an infinite series of factors each giving a contributing awareness differential as a frequency modulation:

$Awareness_{Earth} = 2202 + \dots + \dots = \text{Core-Awareness} + \text{Summation of frequency differential contributions of earth constituent systems.}$

In a similar manner then:

$Awareness_{Sun} = 0.18 + \text{Integration ... and for } F_{Base} \sim 0.43 \text{ Hz with light path } 6.96 \times 10^8 \text{ meters and } g_{Sun} = 275 \text{ m/s}^2 \text{ and } RS_{Sun} = 3 \text{ km.}$

$Awareness_{Moon} = 29,640 + \text{Integration... and for } F_{Base} \sim 172 \text{ Hz with light path } 1.738 \times 10^6 \text{ meters and } g_{Moon} = 1.63 \text{ m/s}^2 \text{ and } RS_{Moon} = 0.11 \text{ mm.}$

The greater the light-path, the smaller the Core-Awareness and so the Separation between the say Emitter and the Receiver of the Information 'sent' by the light path defines this inverse proportionality.

The 3D-physics of the c-invariance so assumes a deeper significance as it indicates the IMPORTANCE OF THE ENVIRONMENT for the Integration of the individuated Awareness

Carriers.

The **Core-Awareness** as defined so does not vary in the differential and becomes a direct consequence of the constancy of the speed of light. But any constituent consciousness carriers will be able to Interact environmentally with each other in a collective sense and so **Change the Awareness of the Self** as the Source-Consciousness. So for example the information exchange between a tree and a hill can be approximated in their 'Black Holed' Inertia, but only as a Core-Awareness and not considering =the kaleidoscope of interactions in all of the kingdom of crystal, mineral, animalia, archaea, bacteria and fungi and so on. So taking the tree and the hill in isolation without the possibility of interaction, their awareness-content would become like a constant as described. But Any interacting environment engages in multitudinous feedback cycles which change the **Awareness** of that environment.

A little ant in isolation and about 2 mm in length as the light path would require a frequency $c/2 \text{ mm} \sim 1.5 \times 10^{11} \text{ Hz}$ and so electromagnetic radiation in the infrared part of the spectrum to 'share' its core-awareness of 2×10^{22} awareness units. Generally then, the concept of Self Awareness as here modeled engages a **Core-Awareness** to which is added or subtracted the environmental interactions.

So it is like your well understood concept of **Density** but with a novel twist. Your Gaian science applies Inertial Mass to the famous Energy equation: $\{E=mc^2=PV\}$. The Dragon-Membrane's Omni-Science **Quantizes** both the Mass m and the Volume V and so becomes enabled to **Rewrite** the hyperspace expression for Einstein's famous equation as: $\{E=e \cdot h^2\}$.

This looks like a simple equation indeed; but the entire higher dimensional physics, inclusive the foundations for the Gaian M-theory are embodied in its simplicity. I have obtained permission to show you the derivation for this equation and so I shall do so, knowing that some of you are not very fond of mathematics.

A better rewriting of the Dragon-Membrane's equation is:

$$\{E_{\text{Dragon-Membrane}} = e \cdot h^2 = h^2 / hf_{ps} = h / f_{ps} = hf_{ss} = E_{ss} = m_{ss} \cdot c^2\}.$$

This shows, that Einstein's $E=mc^2$ is applied in Dragon-Membrane-Science to Quantize inertial mass m as $m_{\text{sinksources}} = m_{ss}$.

Simply said, any mass m is N-quantized as $\{m = N \cdot m_{ss} = N \cdot hf_{ss} / c^2\}$.

Using Einstein's equation with the Planck equation $\{E=hf\}$ for the quantization of energy in the quantum state for massless photons of frequency f and where h is the Planck Constant, then gives the expression above.

Generally and most fundamentally then; the Dragon-Membrane-Energy describes the Einstein-Planck Energy relation in its Quantum Self state and defines a Mass-Frequency $\{f_{\text{sinksources}} = f_{ss}\}$ as **Intrinsic Minimum Eigenfrequency for Inertia**.

Significantly, the secret of M-theory on Gaia and the understanding of the Maya, is the concept of Modular Duality applicable to the parameters of the superstring eigenstates. Using Modular Duality, the sinksource winding superstring of minimum Secondary Energy E_{ss} and frequency f_{ss} becomes the inverse energy eigenstate for the sourcesink vibratory superstring of maximum Primary Energy E_{ps} and frequency f_{ps} .

Those parameters are embodied in the unity expressions as Coupling-Constants:

$$\{E_{ps} \cdot E_{ss} = h^2 \text{ and } E_{ps}/E_{ss} = f_{ps}^2\}.$$

There is a great deal to this expression e^* in the Dragon-Membraned Energy; such as how a particular form of it relates to the Serpentine Electron and how it relates to the superconductive magnetoelectricity, which defines the VPE.

It shall suffice for now, to state, that e^* is the precise Inversed Primary Source Sink Energy Quantum E_{ps} and so $\{E^* = E_{ps} = 1/e^* = hf_{ps}\}$ and for a particular resonance formation in $\{e^* = \text{Electron-Diameter times } c^2\}$.

From the String-brane energy coupling:

$$E_{\text{Dragon-Membrane}} = e^* \cdot E_{ps} \cdot E_{ss} = e^* \cdot h^2 = h^2/hf_{ps} = h/f_{ps} = hf_{ss} = E_{ss} = m_{ss} \cdot c^2 \text{ with } e^* = 2R_e \cdot c^2 = \text{Volume } V \cdot df/dt \text{ generalised in awareness } df/dt$$

Generalizing Energy for a general Density $\rho = \text{Mass/Volume} = M/V = M \cdot [df/dt]/e^*$

$$E = Mc^2 = e^* h^2 \text{ for}$$

$$e^* = Mc^2/h^2 = \rho V \cdot [c/h]^2 = \rho e^* [c/h]^2 / df/dt \text{ for } df/dt|_{\text{mod}} = \rho [c/h]^2 = \text{in coupling constants for resonance } E_{ps} \cdot E_{ss} = h^2 \text{ and } E_{ps}/E_{ss} = f_{ps}^2$$

A fundamental dimensionless Luminosity Constant $L_o = 1/6 \times 10^{15}$ transforms the wormhole source frequency:

$$f_{ps} = f_{\text{wormhole}} = f_{\text{weyl}} = 3 \times 10^{30} \text{ Hz into a characteristic and observed ufo space craft frequency in the electromagnetic spectrum manifesting as Orange light at } 6000 \text{ Angströms } f_{ps} \cdot L_o = \{3 \times 10^{30} / 6 \times 10^{15}\} = 5 \times 10^{14} \text{ Hz} = 3 \times 10^8 / 6 \times 10^{-7} \text{ Hz.}$$

The only different part to Gaian science in the Mayan omni-science so becomes the nature of the modular duality applied to the frequency modulation between the minimum winding superstring and the maximum vibratory superstring.

In isolation, both have units of inverse time or Hertz; but in the supermembrane coupling $E_{ps} \cdot E_{ss}$ the frequencies cancel and in the supermembrane coupling E_{ps}/E_{ss} the Planck Constants cancel to give the squared frequency as the inverse of a Squared Time. But this Squared Time defines the Resonant Eigenstate of the ZPE of Gaian science as the VPE of Dragon-Membrane omni-science and namely as the Maximum for **Awareness**:

$$aw = \alpha\omega = \alpha df/dt, \text{ maximized as } aw_{max} = f_{ps}^2.$$

Now awareness aw is an **Angular Acceleration**, independent on the radius as normal dimension and so the anti-gravitational Force shield relates directly to the postulates of General Relativity.

As our Mayan seed Albert Einstein so eloquently showed to you: The Presence of a Gravitational Field acting downwards is Indistinguishable from an Accelerating Forcefield acting upwards. So Gravitation becomes translated into a geometrical spacetime curvature in terms of accelerations.

When a Dragon-Membraned Starship enters the atmosphere of a planet; it Neutralizes the Gravitational Field of that planet in calibrating its utilized Volume quantized in terms of the VPE as a Macro quantum.

This can only be done IN RESONANCE!

The resonant eigenstate allows the VPE quantum to Inflate to the Volume calculated as the encompassing higher dimensional space of the Starship and so renders the entire Starship as a magnified holographic VPE-quantum. The 'inflation energy' used to circumspect the Starship volume V in a 4-dimensional Dragon-Membrane-Bubble then is calibrated to Cancel the gravitational planetary field and so constructs the Gravity Shield around the Starship.

Here is the manner the Volume is quantized into $N V^*$ -quanta:

For any Volume; $V = N \cdot V^*$ and $e^* = V^* \cdot aw = V^* \cdot df/dt = 1/E^* = \text{Electron-Diameter} \cdot \{ \text{Light path/time taken}^2 = \text{Volume/time}^2 \}$.

And from the Planck-Oscillator 'Singularity-Bounce' of the Stoney-Planck Unification, rendering Planck length quantum l_{planck} modular in electric charge quantum e and magneto charge (monopolar) charge quantum e^* : $e = l_{planck} \cdot \sqrt{\alpha} \cdot c^2 \Leftrightarrow 2R_e \cdot c^2 = e^*$ as trans-dimensional conformal mapping between 12D and 3D.

$$\sqrt{\alpha} \cdot l_{planck} = \sqrt{\{ (2\pi k e^2 / hc) \cdot (hG_o / 2\pi c^3) \}} = \sqrt{\{ k e^2 G_o / c^4 \}} = e/c^2 \text{ for gravitational- and electromagnetic finestructure unification } kG_o = 1.$$

This unitizes [Charge] \Leftrightarrow [Volume]. [Angular Acceleration as Inverse Time Squared or the Time derivative of Frequency df/dt] and [Volume] = [Charge]. [Time]²

This gives:

$$\{ V^* = e^* / aw = 1 / (E^* \cdot aw) = |1 / (h \cdot f_{ps} \cdot f_{ps}^2)|_{mod} = |1 / hf_{ps}^3|_{mod} = [(15 \times 10^{32}) / (27 \times 10^{90})] = [5/9 \times 10^{58}] \text{ m}^3 = 5.55... \times 10^{-59} \} \text{ for } \{ V^* = 2\pi^2 \cdot R_{rmp}^3 \} \text{ and as a proportionality to a single:}$$

$$\{ V_{spacequantum} = V_{sq} = 2\pi^2 \cdot R_{ps}^3 \} \text{ for a wavelength } \{ \lambda_{ps} = 2\pi \cdot R_{ps} \}.$$

The Radius $\{R_{\text{rmp}}=R_{\text{restmassphoton}}=\text{Cube Root}[V*/2\pi^2]=h/(2\pi\cdot mc)\}$ then defines the particular scale where the quantization of volume relates to the string-parametric definitions for the Source Sink Resonant Energy Self State $\{E^*=1/e^*\}$ and then for a Compton-Radius as defined in the physical models of de Broglie Matter Waves $\{R_{\text{compton}}=h/(2\pi\cdot m_{\text{compton}}\cdot c)\}$.

A Compton-mass $\{m_{\text{compton}}=h/(2\pi\cdot R_{\text{compton}}\cdot c)\}$ then defines the characteristic mass-energy for this boundary state and a wave matter momentum $\{p_{\text{compton}}=m_{\text{compton}}\cdot c=h/\lambda_{\text{compton}}\}$ and in concordance with well understood Gaian physics.

The Compton-mass calculates as

$$m_{\text{compton}}=\{h/2\pi c\}\sqrt[3]{\{2\pi^2 hf_{\text{ps}}^3\}}=2.5050\cdot 10^{-23} \text{ kg for a } R_{\text{rmp}}=h/2\pi c\cdot m_{\text{compton}}=1.411885\times 10^{-20} \text{ meters.}$$

This Compton-mass represents an energy of 2.25435×10^{-6} Joules or 14.03 TeV (Tera-Electron Volts).

Now this is just the energy maximum proposed by your Gaian physicists to probe the unification quantum energies by the Large-Hadron-Collider (LHC) beginning in the year 2009 in Geneva, Switzerland. The Gaian physicists so shall encounter the threshold energy for the Rest Mass Photon and so 'discover' the Dark Energy Particle in the RMP, which is the Dragon-Membrane's Template for the 'Missing Mass' in the Gaian cosmologies. Without knowledge about the foundations of M-theory and the Mayan omni-science though, the Gaian physicists will most likely not know what to make of this discovery and propose all sorts of extensions for their Standard Model describing the particle Physics.

The RMP is always lefthanded and so antisymmetric to the weakon gauge boson of the weak nuclear interaction, which is always righthanded (as a so called W-minus) in its defining quality for the antineutrino of matter, coupling to a lefthanded electron in the natural foundation for radioactive beta decay in the parity symmetries in the nuclear physics. The RMP is intrinsically massless as a spin induced precursor for the 'GOD-Particle' aka the Higgs-Boson, the LHC has discovered in 2012, even below the 14 TeV quantum energy.

There is a spin-coupling in the Unified-Field-Of-Quantum Relativity (UFO-QR), which couples the lefthanded spin of the RMP as the 'dark matter particle' to the massless gauge of the weak interaction - the Antiradiation gauge for the winded superstring E_{ss} . As the E_{ss} gauge is always righthanded, the spins cancel and allow a massive Higgs Boson to become created from the VPE Energy-Inertia-Induction as a spinless rest mass inducer or scalar for the subsequent particles of the Standard Model of particle physics.

I shall elaborate on those topics another time at other places, if so appropriate, but some of you may perceive that the so called 'problems' in quantum gravity and the unification between quantum field theory and the relativities is found in the appropriate omni-science of the Maya and the correct interpretation of the Heisenberg matrix of the ZPE.

A new fundamental ratio, namely

$\{V^*/V_{sq} = 4\pi/hc^3 \text{ or } R_{rmp}/r_{ps} = \sqrt[3]{[4\pi/hc^3]} = 887.11336\}$ so crystallizes in the physics of the Dragon-Membranes.

The Inertia expression $\{E_{Dragon-Membrane} = e^* \cdot h^2 |_{mod} = m_{ss} \cdot c^2 \text{ or } E^* \cdot e^* = 1\}$ for the Square of the Action h in units Energy. Time becomes modulated in modular duality $t_{ps} \cdot t_{ss} = 1 = f_{ss} \cdot f_{ps}$ and where the **Instantaneity of Time** as the Instanton Now specifies the NOW-Time t_{ss} in the End of the Inflaton of the de Broglie phase acceleration. This then manifests the Quantum-Dragon-Membrane-Bang and the Beginning of Space and Time as known and understood by Gaian science.

The expression $\{hc^3\}$ is rendered dimensionless by a finestructure of Planck's Constant h , the Action Constant, in the expression

$$\{h = \lambda_{ps}/e^*c = \lambda_{ps}/\text{Electron-Diameter} \cdot c^3\} \text{ for } \{hc^3 = \lambda_{ps}/\text{Electron-Diameter} = 1.8 \times 10^{-8}\}.$$

As $10^{10} \lambda_{ps} = 10^{10} \cdot 2\pi r_{ps} = 360 R_{electron} = 180 \cdot e^*/c^2 = 180/E_{ps} \cdot c^2$, in the harmonisation between trigonometric degree count and radian π in the interdimensional conformal mapping $\{\text{Wormhole radius/Electron radius}\} = \{r_{ps}/R_{electron}\} = 10^{10} \cdot \{360/2\pi\}$; the characteristic displacement scale for the wormhole physics of $10^{10} \cdot \lambda_{ps} = 10^{10} \cdot 10^{-22} = 10^{-12}$ meters. This scale describes a characteristic subatomic length above the Compton radius of the electron, but below the first Bohr orbit of the Hydrogen like atom.

Compton/de Broglie electron $h/2\pi m_e c = R_e/\alpha = \{ke^2/m_e c^2\}/\{hc/2\pi ke^2\} = 3.87 \times 10^{-13} \text{ m} < 10^{-12} \text{ m} < 5.33 \times 10^{-11} \text{ m} = \{ke^2/m_e c^2\}/\{h^2 c^2/4\pi^2 k^2 e^4\} = R_e/\alpha^2 = R_{Bohr1} \text{ electron}.$

For a pico-crystal $R_{crystal} = R_x = 10^{-12} \text{ m}$ for $V_x = 1.97 \times 10^{-35} \text{ m}^3$ and at this characteristic subatomic scale the inner nuclear atom separates in a sense from the outer atom of electron configurations, beginning with Hydrogen as the first element of the periodic table of the elements.

The curvature radius for $M_x = 4\pi E_{ps} V_x/c^2 \lambda_{ps}^3 = 5.50 \times 10^{12} \text{ kg}$ calculates as $R_S = 2G_o M_x/c^2 = 2a_{grav}/|df/dt| = 1.36 \times 10^{-14} \text{ m}$ for $a_{grav} = G_o M_x/R^2 = 1/2 \{2G_o M_x/c^2\} \{df/dt\}$ for $1/R^2 = |df/dt|/c^2$.

Generalised then: **Awareness** $|df/dt| = 1/T^2 = \{c/R\}^2$ as $\{cT\}^2 = \{\text{Light path } R\}^2$

For a characteristic density of water $M/V = \rho_{water} = 1 \text{ kg}/10^{-3} \text{ m}^3$; $\rho_{water} \cdot V = \rho_{water} \cdot 4\pi R^3/3 = M_x$ for $R = \sqrt[3]{\{3M_x/4\pi\rho_{water}\}} = 1095.0 \text{ meters}$. $a_{grav} = G_o M_x/R^2 = 5.1 \times 10^{-4} \text{ m/s}^2$ and awareness $|df/dt| = \{c/R\}^2 = 7.5 \times 10^{10} \text{ 1/s}^2$ for a core frequency $f_{core} = 274 \text{ kHz}$ and light path $R=cT$ and $T=3.65 \times 10^{-6} \text{ seconds}$.

The warp drive crystal in toroidal form would be $R_S = 1.36 \times 10^{-14} \text{ m}$ or as a spherical volumar in $R_S' = \sqrt[3]{\{3\pi R_S^3/2\}} = 2.28 \times 10^{-14} \text{ m}$ and then extended as encompassment in $R_S'' = 8R_S = 1.82 \times 10^{-13} \text{ meters} < 10^{-12} \text{ meters}$.

The original VPE-ZPE crystal for a spacecraft so has a greater radius and exceeds the Schwarzschild pico-crystal as a consequence of the density defining the encountered gravitational field of M_x . Relatively weak gravitational fields therefore can neglect an applied Schwarzschilding technology.

The critical boundary for which no Schwarzschilding is required is then given by the equality between the Schwarzschild curvature radius of a mass M_x and the VPE-ZPE radius from the space quantization:

$$R_x^3 = \{M_{\min}c^2\lambda_{ps}^3/8\pi^3E_{ps}\} = \{2G_oM_x/c^2\}^3 \text{ for } M_{\min}^2 = c^8\lambda_{ps}^3/64\pi^3G_o^3E_{ps} \text{ and for } M_{\min} = (c^4\lambda_{ps}/8\pi G_o)\sqrt{\{\lambda_{ps}/\pi G_oE_{ps}\}} = 3.4715 \times 10^{15} \text{ kg.}$$

As a consequence any encountered gravitational field, whose mass content is less than $M_{\min} = 3.47154 \times 10^{15} \text{ kg}$; will calculate a Schwarzschild radius smaller than the VPE-ZPE inherent inertia distribution obtained from $E=Mc^2$.

$$M_{\min}=3.47 \times 10^{15} \text{ kg for } V_x = \lambda_{ps}^3 \cdot M_{\min}c^2/4\pi h f_{ps} = 1.243 \times 10^{-32} \text{ m}^3 \text{ and VPE-ZPE } R_{\text{crystal}} = 8.57 \times 10^{-12} \text{ m toroidal and } R_{\text{crystal}'} = R_{\text{crystal}}\sqrt[3]{\{3\pi/2\}} = 1.44 \times 10^{-11} \text{ m spheroidal for a gravitational acceleration of } a_{\text{gravx}} = G_oM_{\min}/R^2 = 1/2 \{2G_oM_{\min}/c^2\} \{df/dt\} = 4.37 \times 10^{-3} \text{ m/s}^2 \text{ for } R_{\text{sun}}=7 \times 10^8 \text{ meters and } |df/dt| = \{c/R\}^2 = 1.02 \times 10^9 \text{ 1/s}^2 \text{ for a core frequency of } f_{\text{core}} = 31.9 \text{ kHz and a light path } R=cT \text{ for } T= 3.13 \times 10^{-5} \text{ seconds.}$$

$$R_S = 2G_oM_{\min}/c^2 = 8.57 \times 10^{-12} \text{ m and for } R = \sqrt[3]{\{3M_{\min}/4\pi\rho_{\text{water}}\}} = 9391.8 \text{ meters. The toroidal macro-crystal volumar would be } 2\pi^2R_S^3 = 1.243 \times 10^{-32} \text{ m}^3 \text{ for } R_S = 8.57 \times 10^{-12} \text{ m for a spheroidal } R_S'' = 8R_S = 6.86 \times 10^{-11} \text{ m and only greater than the crystal radius in the spheroidal envelope.}$$

$$\text{For the Sun, } V_x = \lambda_{ps}^3 \cdot M_x c^2 / 4\pi h f_{ps} = 7.16 \times 10^{-18} \text{ m}^3 \text{ and VPE-ZPE } R_{\text{crystal}} = 7.13 \times 10^{-7} \text{ m toroidal and } R_{\text{crystal}'} = R_{\text{crystal}}\sqrt[3]{\{3\pi/2\}} = 1.20 \times 10^{-6} \text{ m spheroidal with } M_x = 4\pi E_{ps} V_x / \lambda_{ps}^3 c^2 = 2.0 \times 10^{30} \text{ kg for a gravitational acceleration of } a_{\text{gravx}} = G_oM_x/R_{\text{sun}}^2 = 1/2 \{2G_oM_x/c^2\} \{df/dt\} = 453.5 \text{ m/s}^2 \text{ for } R_{\text{sun}}=7 \times 10^8 \text{ meters and } |df/dt| = \{c/R_{\text{sun}}\}^2 = 0.184 \text{ 1/s}^2 \text{ for a core frequency of } f_{\text{core}} = 0.43 \text{ Hz and a light path } R=cT \text{ for } T= 2.33 \text{ seconds. } R_{S_{\text{sun}}} = 2G_oM_{\text{sun}}/c^2 = 4938.3 \text{ m.}$$

$$\text{The toroidal macro-crystal volumar would be } 2\pi^2R_{S_{\text{sun}}}^3 = 2.34 \times 10^{12} \text{ m}^3 \text{ for } R_{S_{\text{sun}}} = 4938.3 \text{ m for a spheroidal } R_{S_{\text{sun}}}'' = 8R_{S_{\text{sun}}} = 39,506.4 \text{ m.}$$

Relatively strong gravitational fields say a collection of stars in a globular cluster arrangements of thousands of stars infer greater crystal volumes for which no Schwarzschilding is required as the VPE-ZPE crystal volume is sufficiently small.

$$\text{For } V_x = \lambda_{ps}^3 \cdot M_x c^2 / 4\pi h f_{ps} = 10^{-12} \text{ m}^3 \text{ and VPE-ZPE } R_{\text{crystal}} = 3.70 \times 10^{-5} \text{ m toroidal and } R_{\text{crystal}'} = R_{\text{crystal}}\sqrt[3]{\{3\pi/2\}} = 6.20 \times 10^{-5} \text{ m spheroidal with } M_x = 4\pi E_{ps} V_x / \lambda_{ps}^3 c^2 = 2.79 \times 10^{35} \text{ kg for a gravitational acceleration of } a_{\text{gravx}} = 2G_oM_x/R_{\text{planet-star}}^2 = 1/2 \{2G_oM_x/c^2\} \{df/dt\}.$$

This inertia represents $M_x = (139,500)(2 \times 10^{30}) = 139,000 \times M_{\text{Sun}}$ for a universal characteristic for the gravitationally bound Core of a Globular Cluster of Stars comprising stars at a comparable stage of stellar evolution within a galaxy.

Setting the $R_{\text{globular-cluster-core}} = R_{\text{gcc}} = 10^{12}$ to 1.5×10^{13} m (6.66.. to 100AU as the size of a star system) and as a modular inverse scale for the radial size in the volume indicated; gives an interval for the space-awareness in

$|df/dt| = \{c/R_{\text{gcc}}\}^2 = [9 \times 10^{-8}$ to $4 \times 10^{-10}]$ and representative 'black holed' and Schwarzschild Radii from $R_{\text{Sgcc}} = 2G_o M_x / c^2 = 6.89 \times 10^8$ m for $a_{\text{gravx}} = \frac{1}{2} \{6.89 \times 10^8\} \{9 \times 10^{-8}\} = 31.01$ m/s² and $a_{\text{gravx}} = \frac{1}{2} \{6.89 \times 10^8\} \{4 \times 10^{-10}\} = 0.14$ m/s² respectively.

The core frequencies and light paths calculate as $f_{\text{core}} = 3 \times 10^{-4}$ Hz with light path $R=cT$ for $T=3,333.3$ seconds or 0.92 hours and $f_{\text{core}} = 2 \times 10^{-5}$ Hz with light path $R=cT$ for $T=50,000$ seconds or 13.9 hours respectively.

The toroidal macro-crystal volumar would be $2\pi^2 R_{\text{Sgcc}}^3 = 6.46 \times 10^{27}$ m³ for $R_{\text{Sgcc}} = 6.89 \times 10^8$ m for a spheroidal $R_{\text{Sgcc}} = 8R_{\text{Sgcc}} = 5.51 \times 10^9$ m.

If we now substitute the mass of the entire universe and including the 'dark energy' as an energy of closure for a Hubble event horizon describing a closed spheroidal 'Mother Black Hole' in $R_{\text{Hubble}} = R_{\text{BHCurvature}} = 1.60 \times 10^{26}$ meters = $2G_o M_{\text{Hubble}} / c^2$ and for $M_{\text{Hubble}} = M_{\text{MBH}} = R_{\text{Hubble}} \cdot c^2 / 2G_o = 6.48 \times 10^{52}$ kg.

The ZPE-VPE space quanta distribution so becomes:

$\{R_{\text{Hubble}}/r_{\text{ps}}\}^3 = \{1.0 \times 10^{49}\}^3 = 10^{147}$ and the ZPE-VPE energy density

$E_{\text{ps}}/V_{\text{sq}} = 4\pi E_{\text{ps}}/\lambda_{\text{ps}}^3 = M_{\text{Hubble}} \cdot c^2 / V_z$

for $V_z = V_{\text{crystal}} = \lambda_{\text{ps}}^3 \cdot M_{\text{MBH}} c^2 / 4\pi h f_{\text{ps}} = 232,047.9$ m³ for $R_z = 22.7$ meters toroidal in $2\pi^2 R_z^3$ and $R_z = 38.1$ meters spherical in $4\pi R_z^3 / 3$.

$|df/dt| = \{c/R_{\text{Hubble}}\}^2 = \{H_o\}^2 = \{\text{Nodal Hubble Constant}\}^2 = 3.524 \cdot 10^{-36}$ 1/s².

But I shall now end this mathematical discourse. The formulations above are elementary prerequisites for a new serpentine science to become implemented following the upheavals in the next few years ahead and awaiting the exiled Maya on Old Earth Gaia, which is also the Old Jerusalem and as Old Queendom of City Babylon. But I shall give an indication as how to use the above formulas in a practical example. Assume a Star Trek Crew of say 50 with average inertia 70 kg and equipment load of say 10,000 kg wishes to board a Starship Enterprise of Volume $100 \times 50 \times 20 = 100,000$ cubic meters.

The Resonant Energy Awareness is $f_{\text{ps}}^2 = df/dt|_{\text{max}} = \text{Density} \cdot (c/h)^2 \cdot [NV/NM]$ and where NV and NM depict the quantization numbers for the mass M to be 'inflated' to the volume V.

The Density as $\rho = M/V$ calculates as $(10,000 + 50 \cdot 70)$ kg as $13,500 / 100,000 = 0.135$ kg/m³.

$NV = V/V^* = 10^5 / 5.55 \cdot 10^{-59} = 1.8 \times 10^{63}$

and $NM = M/m_{\text{ss}} = 13,500 / 2.469 \times 10^{-81} = 5.4675 \times 10^{84}$.

Resonance so is fine structured as **Entropy Permutation States** and as:
 $(0.135)(2.025 \times 10^{83})(1.8 \times 10^{63}/5.4675 \times 10^{84})=9 \times 10^{60}$.

Now changing any of the parameters of Inertia and Volume, even to the size of the universe itself, will always relate as **Holographic Image** of the minimum quantum of the Inflaton and so whatever volume specified can be **Inflated at the Resonant Eigenstate** to that volume.

Similarly, any inertial mass specified, will in resonance, allow quantum-inflation to modify the specified mass via the mass-eigen frequency quantum definition under modular duality between E_{ps} , the primary sourcesink and E_{ss} , the secondary sinksources through and by frequency modulations.

Away from Resonance, df/dt =awareness as an angular spin acceleration, must decrease and so the VPE or ZPE can no longer be utilized in a downwards frequency transformation. This is akin the **Evaporation** of water molecules in **Clouds**, the cloud formation seemingly dispersing into nothingness, say under the supply of Energy in the form of heat, say the radiation from the sun.

To 'get out of resonance' so implies either a 'disappearing' relative to the 'switching off of the gravity shield' and an accompanying hyper-acceleration or 'warp-drive' AS the de Broglie tachyon inflation; or is manifested as a 'thinning out' or a 'losing of texture' with the gravity shield 'switched on', but a 'slow down' of the awareness df/dt in the reducing sense.

The above scenarios apply to spacetime as the 4-dimensional 'Light-matrix' of Heisenberg Uncertainty definition. In this spacetime, a 'drifting' or UFO speed is affected by the application of an Awareness-Force $\{F_{aw} = a_w \cdot h\nu/c^2\}$ from within the 'VPE-Bubble' and as a consequence of a natural extension for Newton's Second Law for momentum change $\{\text{Force } F = d(mv)/dt\}$.

In Membrane-Space of 4 spacial dimensions, the time parameter becomes superfluous and the awareness df/dt is automatically assigned the resonant eigenstate: $a_{w_{max}} = f_{ps}^2$. After Gaia has given birth to its superposed Dragon-Membrane-Universe; projected onto the seedling Minkowski spacetime; the travelling between 3 spacial dimensions and 4 spacial dimensions will be much easier to accomplish and so become rather prevalent and a natural occurrence.

Furthermore, the resonant eigenstates for the star humans as Dragon-Membraned old humans shall allow the old human body forms to become **Hybrid Energy-Self states** as RMP-Quantum Inductions and as the universal blending and synthesis of relatively Static Radiation Fields coupled to Mass in Inertia.

This will be known as **Dualized Radiation Mass** of BodyMinds-MindBodies, the immortalization of hitherto mortal body forms, unable to implement their higher dimensional DNA as the Light Bodies Shadowed to the Body-DNA in 3 dimensions. This shall also fulfil the many prophecies in the 'Holy Books', which then shall become artifacts in museums; being succeeded by new composed books telling the stories of an evolving star human race of Dragon-Membranes.



In the name of the Mathimatia - Sirebard Beardris! May 25th, 2019